

# SUNY/Erie Canal Bicentennial Forum

## Arts, Culture and Communities on the Canal

A timely discussion about how connecting arts and culture along the Erie Canal can become an essential driver of Sustainable Communities.



**May 9, 2018, 1 - 3:30 pm**  
**(Check-in begins @ 12:00 pm)**

Schenectady County Community College  
Elston Hall, Van Curler Room  
78 Washington Ave  
Schenectady, NY 12305

**Reception to follow at**

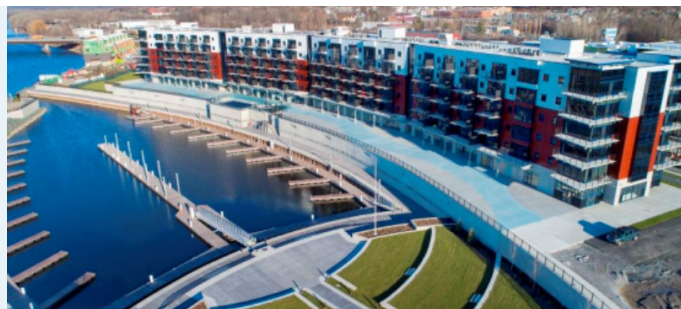
*Mohawk Harbor*

**4 - 5:30 pm**

**RSVP to**

[canalevents@canals.ny.gov](mailto:canalevents@canals.ny.gov)

(please indicate if you will be attending the forum, the reception or both)



Canal  
Corporation

Department  
of State



SCHENECTADY  
COUNTY COMMUNITY COLLEGE  
SUNY



The State University  
of New York